




MR09 - Mise en place de barrières semi-perméables pour la petite faune

MR09 - Mise en place de barrières semi-perméables pour la petite faune

RN124 Déviation Gimont l'Isle Jourdain

1 / 5

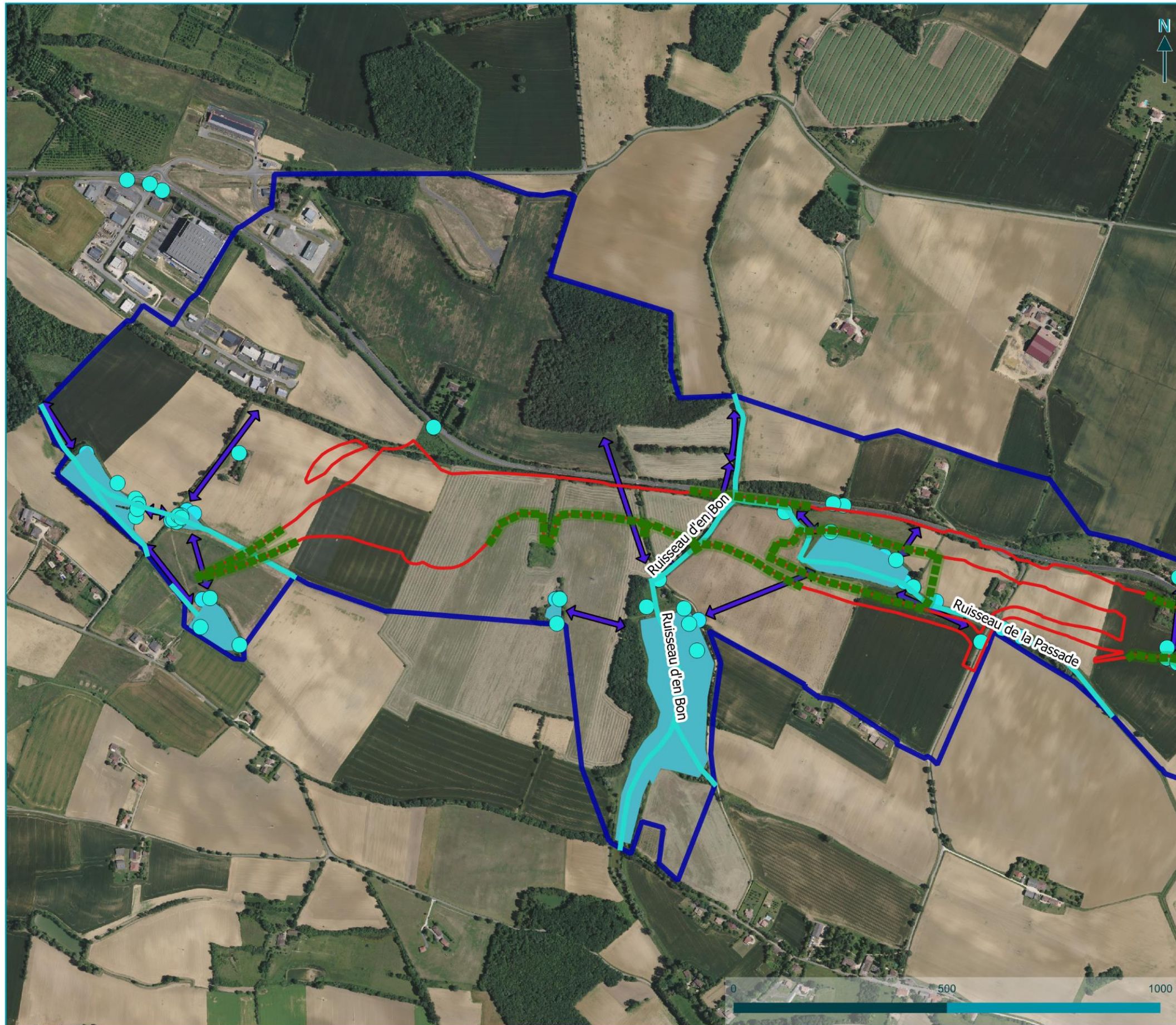
-  Aire étude rapprochée
-  Emprise travaux
-  Cours d'eau

Enjeux

-  Observations d'amphibiens
-  Axes migration amphibiens
-  Habitats de reproduction des amphibiens

Mesures




-  MR09 - Barrières anti-retour




MR09 - Mise en place de barrières semi-perméables pour la petite faune

RN124 Déviation Gimont l'Isle Jourdain

2 / 5

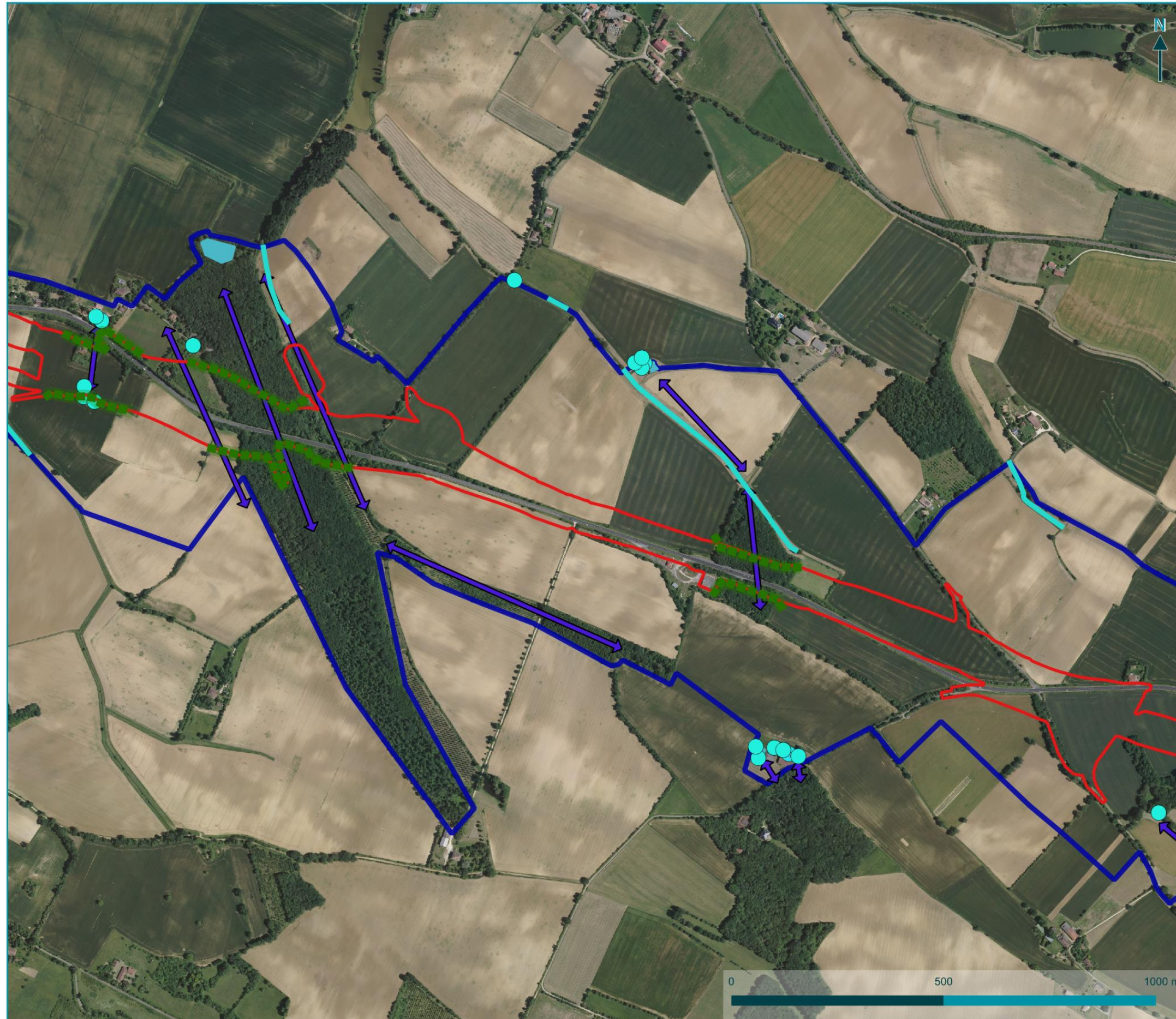
-  Aire étude rapprochée
-  Emprise travaux
-  Cours d'eau

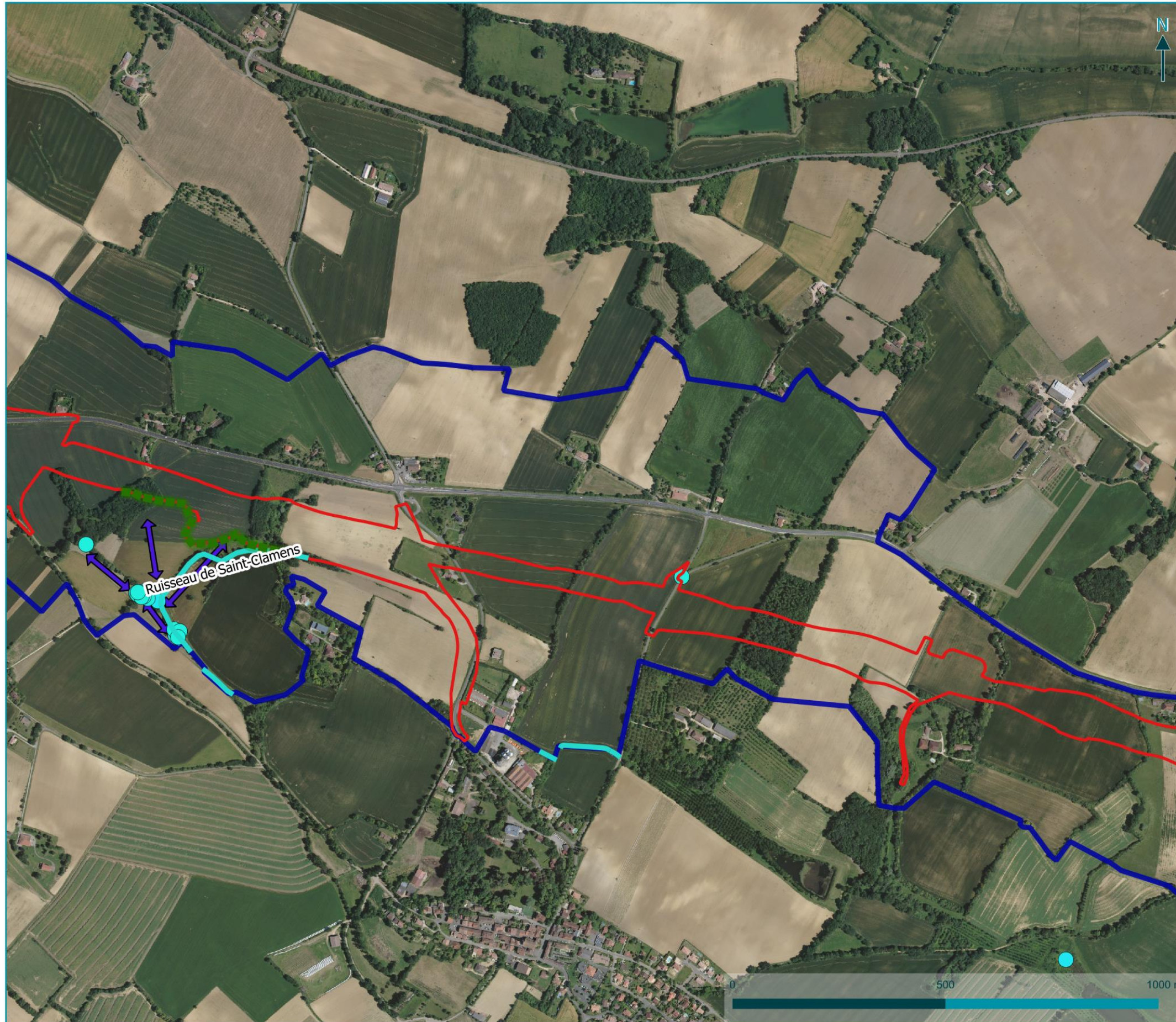
Enjeux

-  Observations d'amphibiens
-  Axes migration amphibiens
-  Habitats de reproduction des amphibiens

Mesures

-  MR09 - Barrières anti-retour





MR09 - Mise en place de barrières semi-perméables pour la petite faune
 RN124 Déviation Gimont l'Isle Jourdain

3 / 5

- Aire étude rapprochée
- Emprise travaux
- Cours d'eau
- Enjeux
 - Observations d'amphibiens
 - ↔ Axes migration amphibiens
 - Habitats de reproduction des amphibiens
- Mesures
 - MR09 - Barrières anti-retour




© DREAL - Tous droits réservés - Cartographie : Biotope, 2021






MR09 - Mise en place de barrières semi-perméables pour la petite faune

RN124 Déviation Gimont l'Isle Jourdain

4 / 5

-  Aire étude rapprochée
-  Emprise travaux
-  Cours d'eau

Enjeux

-  Observations d'amphibiens
-  Axes migration amphibiens
-  Habitats de reproduction des amphibiens

Mesures








-  MR09 - Barrières anti-retour



MR09 - Mise en place de barrières semi-perméables pour la petite faune

RN124 Déviation Gimont l'Isle Jourdain

5 / 5

-  Aire étude rapprochée
-  Emprise travaux
-  Cours d'eau
- Enjeux
 -  Observations d'amphibiens
 -  Axes migration amphibiens
 -  Habitats de reproduction des amphibiens
- Mesures
 -  MR09 - Barrières anti-retour

