




MA04 - Translocation de Jacinthe de Rome

MA04 - Translocation de Jacinthe de Rome

RN124 Déviation Gimont l'Isle Jourdain



1 / 3

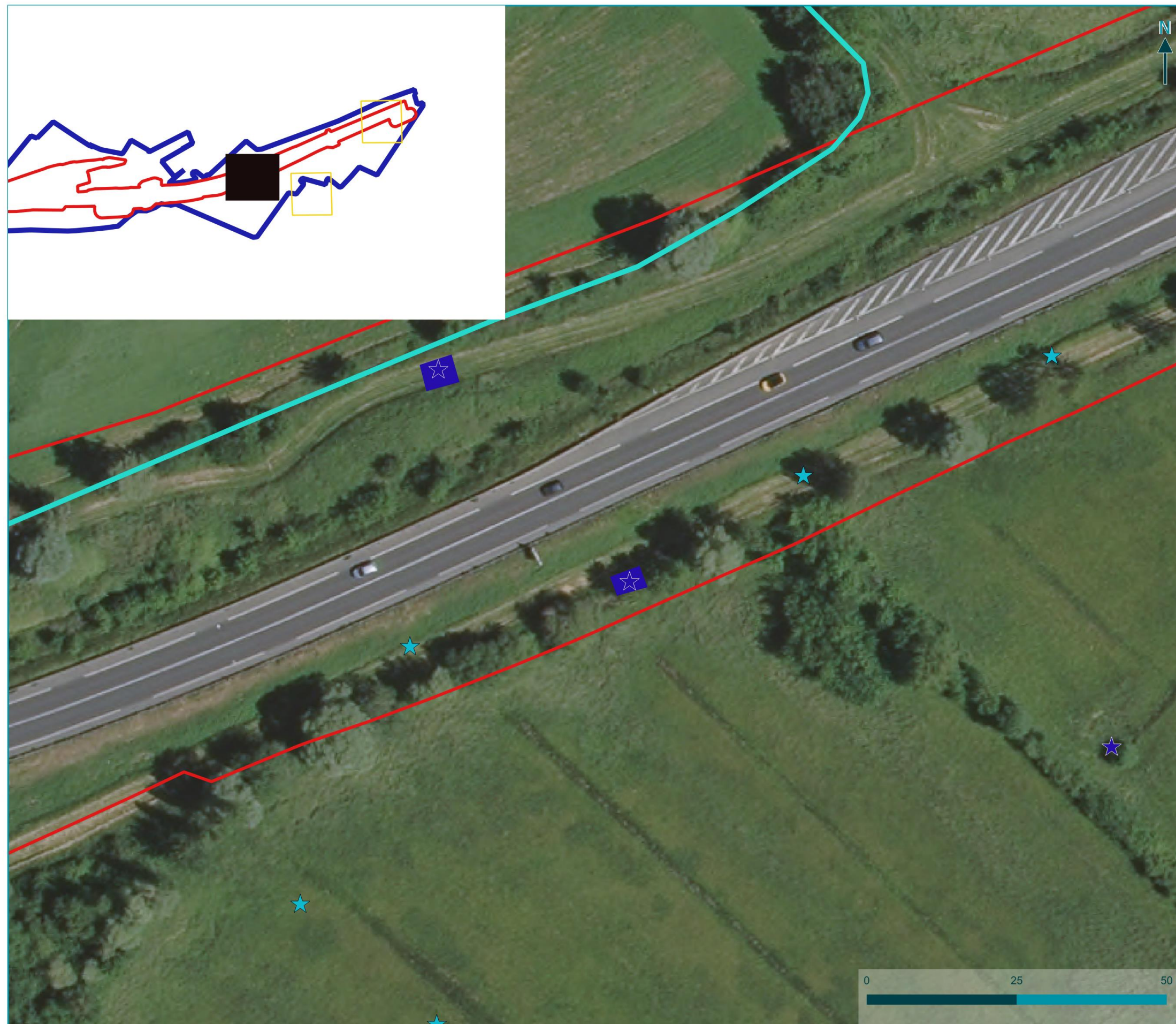
-  Aire étude rapprochée
-  Emprise travaux
-  Cours d'eau

Flore protégée

-  *Bellevalia romana*
-  *Eleocharis uniglumis*
-  *Nigella hispanica*
-  *Tragopogon porrifolius*
-  *Trifolium squamosum*
-  *Veronica scutellata*

MA04 Transplantation Jacinthe de rome




-  Sites de prélèvements
-  Site récepteur



MA04 - Translocation de Jacinthe de Rome

RN124 Déviation Gimont l'Isle Jourdain



2 / 3

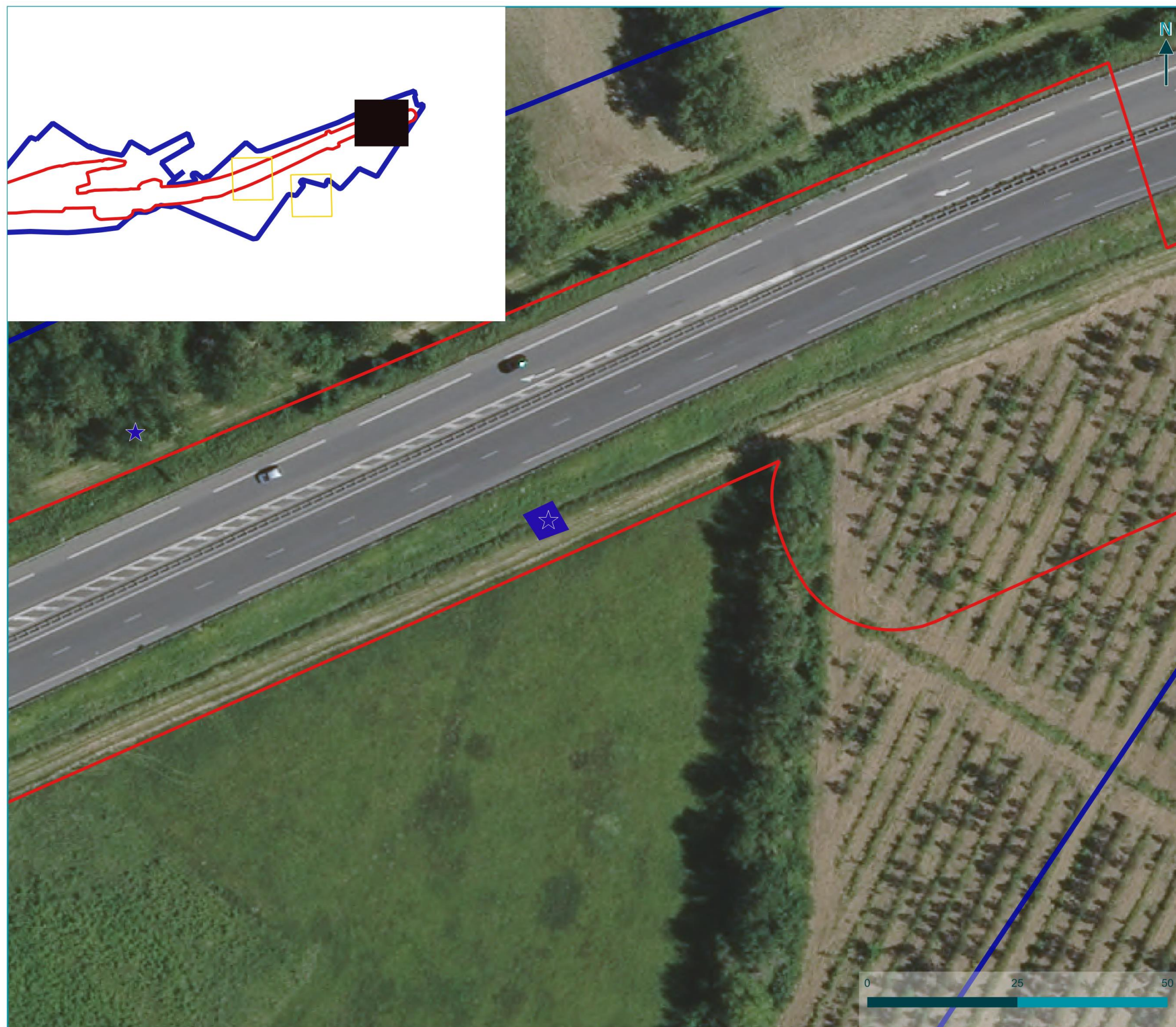
-  Aire étude rapprochée
-  Emprise travaux
-  Cours d'eau

Flore protégée

-  *Bellevalia romana*
-  *Eleocharis uniglumis*
-  *Nigella hispanica*
-  *Tragopogon porrifolius*
-  *Trifolium squamosum*
-  *Veronica scutellata*

MA04 Transplantation Jacinthe de rome




-  Sites de prélèvements
-  Site récepteur



MA04 - Translocation de Jacinthe de Rome

RN124 Déviation Gimont l'Isle Jourdain

3 / 3



-  Aire étude rapprochée
-  Emprise travaux
-  Cours d'eau

Flore protégée

-  *Bellevalia romana*
-  *Eleocharis uniglumis*
-  *Nigella hispanica*
-  *Tragopogon porrifolius*
-  *Trifolium squamosum*
-  *Veronica scutellata*

MA04 Transplantation

Jacinthe de rome

-  Sites de prélèvements
-  Site récepteur

